

## Media Release

Voith GmbH & Co. KGaA  
Group Communication  
St. Poeltener Strasse 43  
89522 Heidenheim, Germany  
Tel.: +49 7321 37-8303  
Fax: +49 7321 37-7110  
www.voith.com

Page 1 of 3

### **Voith presents the new self-contained CLSP servo drive: A more compact design with greater efficiency**

2018-03-20

- **The new self-contained CLSP servo drive excels due to its compact size and high energy efficiency**
- **The drive relies on automatic, load-dependent shifting, which reduces the connected load**
- **The sensors installed provide the basis for complete integration into automatic manufacturing systems and production facilities**

**Rutesheim, Germany. Voith presents the new self-contained CLSP (Closed Loop 4Q Pump) servo drive, a hydraulic linear axis from the Voith product family of self-contained drives. The high energy efficiency, overload protection, and virtually wear-free operation, are all characteristic features of Voith self-contained servo drives. The CLSP drive also boasts automatic, load-dependent shifting of the hydraulic transmission. This significantly reduces the connected load of the drive. As a result, the motor and inverter sizes are more compact.**

The CLSP servo drive can be used for all direct linear motions, particularly when dynamic response, reproducibility and reliability are required. Plant operators can expect significant increases in productivity thanks to the speed of the drive. The drive operates with a force of up to 500 kN and combines speed with extraordinary robustness, a fact demonstrated by its three-year maintenance intervals or 20,000 hours of operation. The CLSP is typically used in the automation of all types of linear motion, handling, and machines with bending, cutting and forming processes.

The CLSP consists of three main components: The servo motor, a 4Q internal gear pump, and a directly coupled hydraulic cylinder. No hydraulic power pack or oil tank is required for operating the self-contained drive. As a result, all components are integrated directly into the servo drive. The

drive is also suitable for force control and position control. In addition, the sensors installed already provide the basis for complete integration into automated manufacturing systems or production facilities.

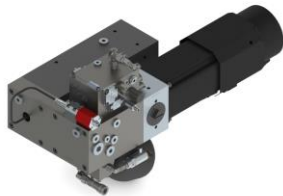
## About the company

Voith Turbo, a Group Division of Voith, is a specialist for intelligent drive solutions, systems and comprehensive services. Customers from highly diverse industries such as oil and gas, energy, rail and commercial vehicles, ship technology, mining and mechanical engineering rely on the advanced technologies and solutions-driven expertise of Voith Turbo.

Voith is a global technology group. With its broad portfolio of systems, products, services and digital applications, Voith sets standards in the markets of energy, oil & gas, paper, raw materials and transport & automotive. Founded in 1867, Voith today has more than 19,000 employees, sales of € 4.2 billion and locations in over 60 countries worldwide and is thus one of the largest family-owned companies in Europe.

Voith GmbH & Co. KGaA  
Group Communication  
St. Poeltener Strasse 43  
89522 Heidenheim, Germany  
Tel.: +49 7321 37-8303  
Fax: +49 7321 37-7110  
[www.voith.com](http://www.voith.com)

Page 2 of 3



The new self-contained CLSP servo drive excels due to its compact size and energy efficiency.

**Contact:**

Robin Wankerl

Global Market Communication Manager

Tel. +49 7321 37-8303

[Robin.Wankerl@Voith.com](mailto:Robin.Wankerl@Voith.com)

Voith GmbH & Co. KGaA  
Group Communication  
St. Poeltener Strasse 43  
89522 Heidenheim, Germany  
Tel.: +49 7321 37-8303  
Fax: +49 7321 37-7110  
[www.voith.com](http://www.voith.com)

Page 3 of 3

**Twitter**

<https://twitter.com/voithgroup>

[https://twitter.com/voith\\_hydro](https://twitter.com/voith_hydro)

[https://twitter.com/voith\\_paper](https://twitter.com/voith_paper)

[https://twitter.com/voith\\_turbo](https://twitter.com/voith_turbo)

[https://twitter.com/Voith\\_DS](https://twitter.com/Voith_DS)

[https://twitter.com/Voith\\_Career](https://twitter.com/Voith_Career)

**Instagram**

<https://www.instagram.com/voithgroup/>

**LinkedIn**

<https://www.linkedin.com/company/voithgroup>

<https://www.linkedin.com/company/voith-hydro>

<https://www.linkedin.com/company/voith-turbo>

<https://www.linkedin.com/company/voith-paper>

<https://www.linkedin.com/company/voith-digital-solutions>

**Facebook**

<https://www.facebook.com/VoithGlobal/>

**YouTube**

<https://www.youtube.com/user/VoithTurboOfficial>

<https://www.youtube.com/user/VoithPaperEN>

[https://www.youtube.com/c/Voith\\_Hydro](https://www.youtube.com/c/Voith_Hydro)